



JUNE NEWS FROM YOUR LIBRARY

LIBRARY CLOSURE

The library will be closed on Monday 13 June for the Queen's Birthday long weekend and will remain closed on Tuesday 14 June to allow carpet repair work on the main stairs. It will reopen on Wednesday 15 June. As always, eBooks are available for download during the closure. If you need assistance please speak to the library staff.



AFFINITY QUARTET: FRIDAY 3 JUNE

There are still seats available for the upcoming performance by Affinity Quartet, which recently won third place at a prestigious international string quartet competition.

Nicholas Waters (violin), Josephine Chung (violin), Ruby Shirres (viola) and Mee Na Lojewski (cello) will perform at the library on Friday 3rd June from 6pm.



Bookings are essential, either by calling 9650 3100 or emailing library@melbourneathenaeum.org.au The performance is free for members and guests pay just \$10. Refreshments will be provided.

If you RSVP and are then unable to attend please let us know as we usually have a waiting list.



REBECCA BARNARD & MONIQUE BRUMBY: FRIDAY 24 JUNE

It will be a powerhouse of performers at the library on 24th June when singer-songwriter Monique Brumby (right) joins Rebecca Barnard (below) on stage.

Rebecca has a musical heritage that spans generations and has sung with artists including Stephen Cummings, Paul Kelly, Tim Rogers, Renee Geyer and Deborah Conway.

ARIA Award winner Monique has had



Top 40 hits in Australia and collaborated and co-written songs with many artists, including Paul Kelly.

In recent years Monique has performed and recorded with the Tasmanian Symphony Orchestra, and she works as a mentor to encourage people from marginalised backgrounds to get involved with music.

To book for the 6pm performance, call the library on 9650 3100 or email library@melbourneathenaeum.org.au It's free for members and \$10 for guests. Refreshments will be provided.



NEW VOLUNTEERS

At a time when we celebrated our volunteers as part of Volunteers Week, we welcomed Rhonda Crandle and Thomas McCrossan who are working in the library on alternate Mondays.

We are indebted to our volunteers, who play a huge role in the library, and thank them for their time and dedication.





SNUFF PLAYREADING: THURSDAY 16 JUNE

A rehearsed reading of a play by the library's 2021 resident playwright, Melissa Reeves (far right), will be held in the library on Thursday 16th June at 6pm.



Snuff tells the story of Robbie, who works part-time in a dead-end job at a suburban newsagency. Robbie gets drawn in to a macabre underground film industry and is seemingly unaware that his life is in danger. Until he meets Petra, the local real estate agent, and she decides to save him.

Melissa has teamed up with award-winning theatre director Susie Dee (above left) and actors Zak Pidd and Emily Goddard to bring *Snuff* to life.

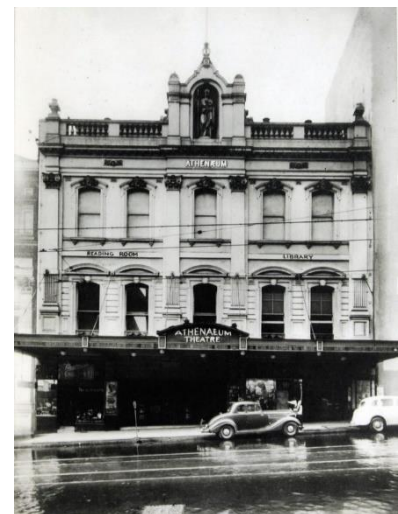
Tickets to the play reading, which starts at 6pm, are \$10 for members and \$15 for non-members and include a glass of wine. Bookings are required by calling 9650 3100 or emailing library@melbourneathenaeum.org.au.

ANNUAL GIVING APPEAL

Our 2022 Annual Giving Appeal is underway and we thank those who have already donated. Funds raised this year will engage a collections specialist to work on a program to assess and catalogue the archives collection. We are keen to reopen the archive and offer members a better opportunity to view this fascinating collection.

All donations of \$2 or more are tax deductible. Two of the easiest ways to donate are by speaking to library staff, or via a link to a charity donation portal hosted by Our Community,

<https://www.givenow.com.au/annualgivingappeal> A tax deductible receipt will be sent to you in time for the end of the financial year.

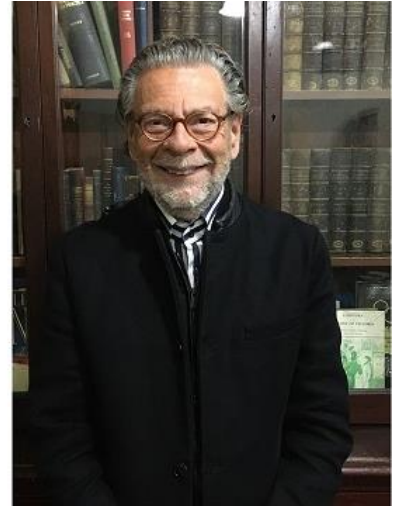




NEW COMMITTEE MEMBERS

Welcome to Anne Wallace and Peter Buckingham, the newest members of the Melbourne Athenaeum's Committee of Management.

Anne is a retired Law professor, with extensive experience in management (including the not-for-profit sector), and a continuing involvement in research.



She is currently working on combining her passion for reading crime fiction with her (developing) Italian language skills to explore the world of 'Giallo' (Italian mystery fiction).

Peter spent 30 years as a teacher and senior administrator at MLC, before being appointed Deputy Principal at Tintern Grammar in 2006. He retired in 2013. As a child, Peter travelled extensively in Europe, which sparked a lifelong interest in travel, history, architecture and culture. He said: "It is in this context that I am delighted to join the Committee of the Melbourne Athenaeum, a venerable institution in the life and culture of one of the world's greatest cities, Melbourne."

Anne and Peter replace Louise Box and Michael Fawaz. We thank Michael, who joined the Committee of Management in April 2017, and Louise, who joined in May 2016, for their voluntary service.